



COMPANY PROFILE

Our Services

About Us

Mahakarya Geo Survey is a leading provider of marine and land survey in Indonesia. Our main focus is to deliver superior and integrated survey services to our clients with the highest professional standards and guidelines.

Established in 2005, MGS has consistently prioritized Quality Health Safety and Environment (QHSE) implementation as the company accredited with ISO 9001:2015, ISO 14001:2015, and ISO 45001:2018. Supported by highly competent and experienced team, our activities are centered on providing supports to oil and gas companies, telecommunications industry, and government projects, to develop efficient, cost-effective, and innovative strategies.

MGS has taken on numerous surveys of navigation of positioning, hydrographic, geophysical, topography, and metocean, as well as aerial mapping. We have demonstrated our strength and rapid growth that are driven by our commitment to delivering an integrated quality solutions to meet clients' requirement for safety and operational excellence while at the same time preserving the environment.

Entering the Q3 and Q4 of 2019, we welcomed S/V Nordic Bahari as the fully dedicated Indonesian-flag 2D/3D seismic vessels into our fleet. The seismic research vessels, with their high flexibility in 2D and 3D seismic survey operation and their cost efficiency, have become a crucial part of exploration, to seek new energy resources known to be the "Giant Discoveries" in Indonesia, as well as in the Asia-Pacific region.

PERFECT

Mahakarya Geo Survey's Value



Passionate



Excellence



Rational



Futuristic



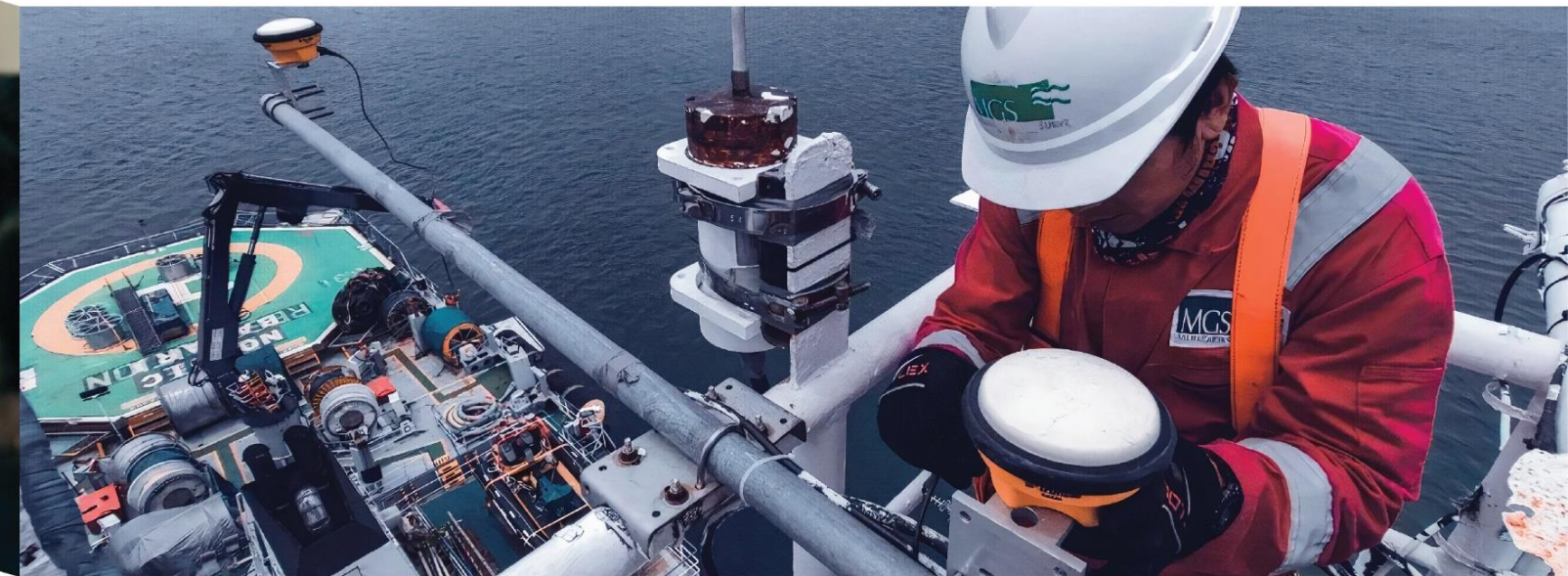
Eager



Corrective



Teamwork



Seismic Survey



Geotechnical Survey



Hydrographic Survey



Airborne Geophysical Survey



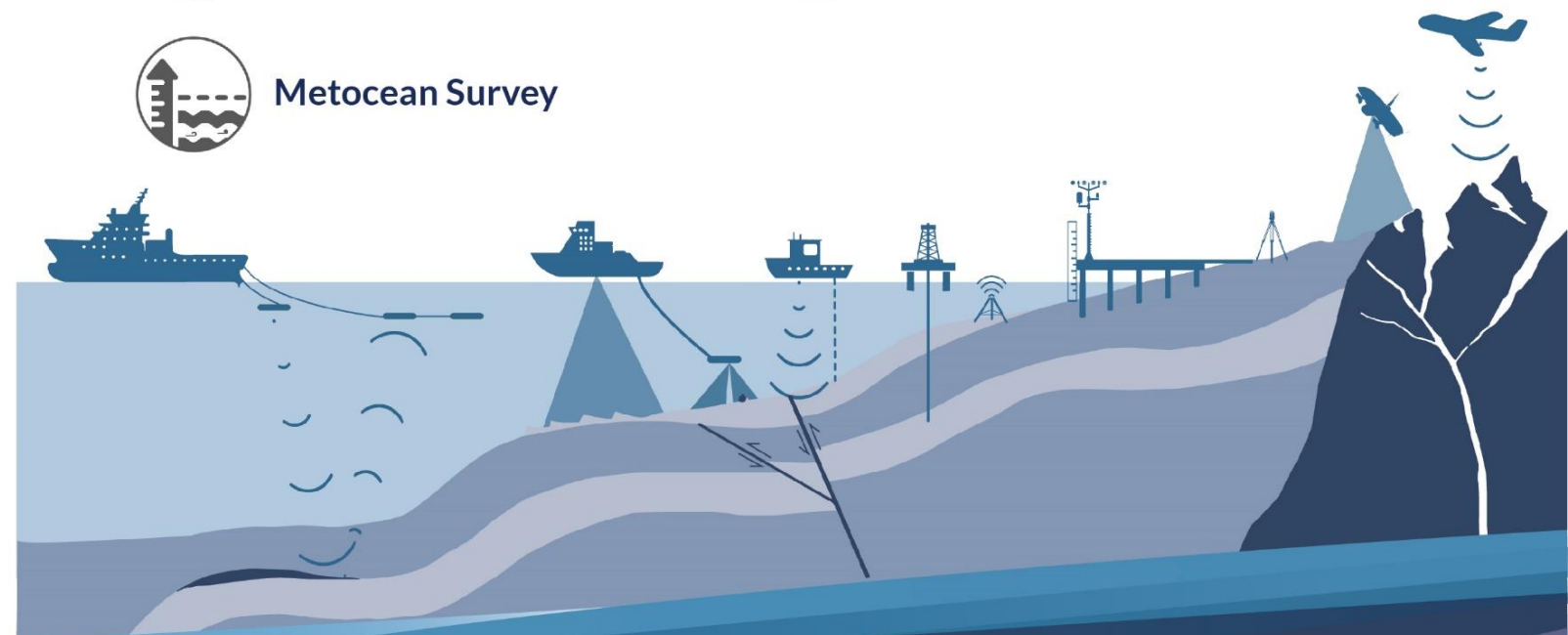
Geophysical Site Survey



Topography Survey

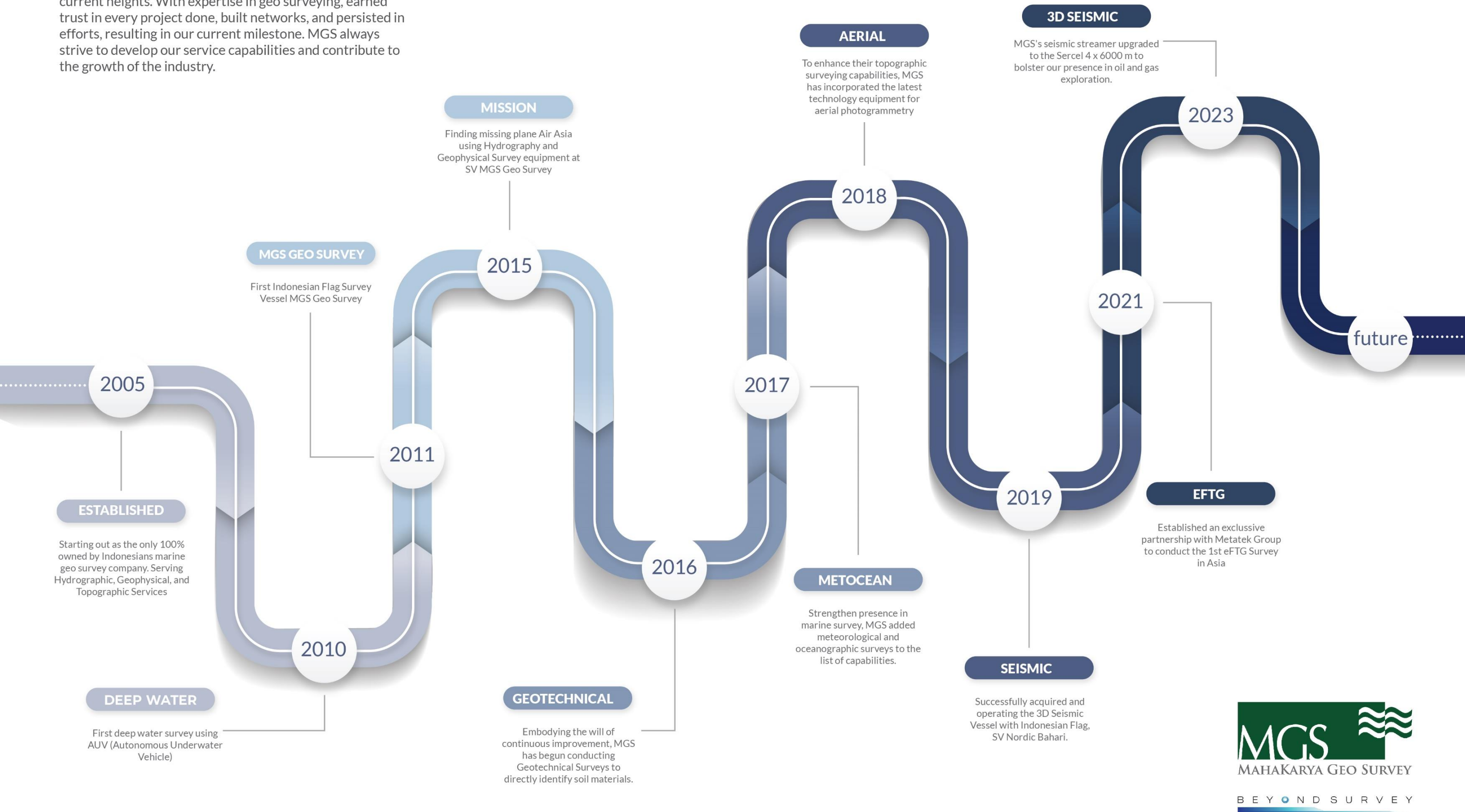


Metocean Survey



Our Milestone

Mahakarya Geo Survey started from humble beginnings. Using a small wooden boat, we embark our first survey and embodied the power of Indonesian ingenuity and risen to our current heights. With expertise in geo surveying, earned trust in every project done, built networks, and persisted in efforts, resulting in our current milestone. MGS always strive to develop our service capabilities and contribute to the growth of the industry.



Airborne Geophysical

2D / 3D Seismic

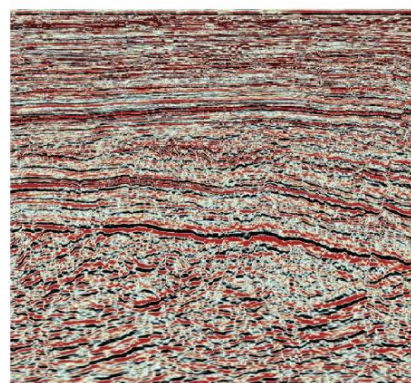
We comprehend the various requirements and impediment to client's overcome project, and hold ourselves to a standard of quality to establish our position as the optimal partner with ideal solutions.

Our S/V Nordic Bahari is an Indonesian-flagged, dedicated 2D and 3D seismic vessel, tailored to conduct uninterrupted surveys in the demanding archipelago of Indonesia and South East Asia.

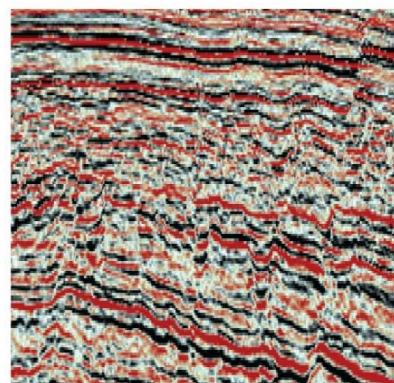
Equipped with state-of-the-art technologies and prioritizing the health, safety, and environmental concerns, our vessel ensures a secure and safe working environment for all personnel onboard.

■ 2D / 3D Exploration Seismic

■ 2D / 3D High Resolution Seismic

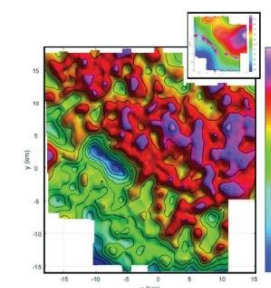


Excellent resolution coupled with good reflection quality down to a depth of 3.5sec



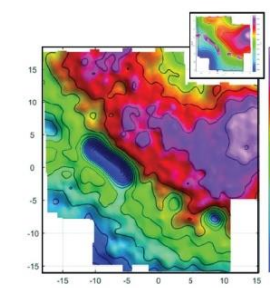
Zoom from previous slide showing complex stratigraphic unit. High resolution data allow for detailed interpretation of the various units.

By implementing the latest and advanced technology invention of eFTG (enhanced Full Tensor Gravity Gradiometry), MGS in exclusive collaboration with Austin Bridgeport (now Metatek Group) is leading the exploration industry in Indonesia with the most powerful result.



FTG Gravity Signal

The FTG solution shows the position of large salt structures.



eFTG Gravity Signal

The eFTG solution images the smaller salt bodies with increased accuracy and fewer false positives.

Metocean Survey

Climate and ocean data gathering will enable you to meet standards which focuses on engineering design, manage and mitigate the natural resources and risks to comply with Sustainable Development Goals.



Geotechnical Survey



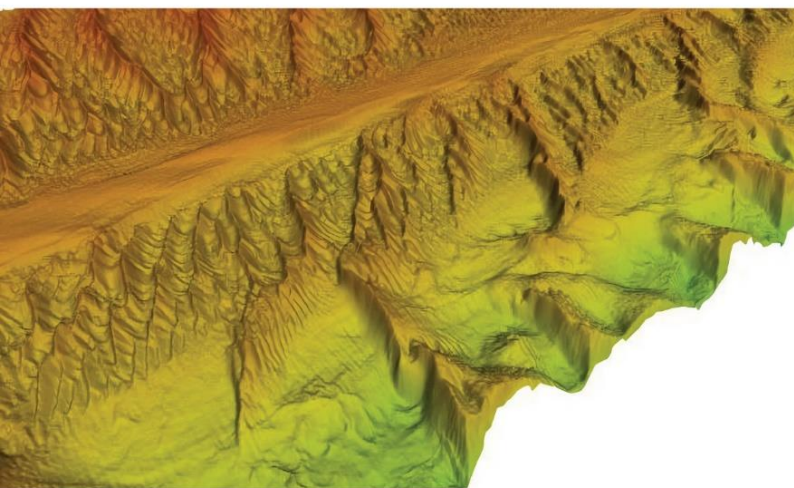
Geophysical Site Survey

For almost two decades, MGS has established a reputation as a reliable and trusted provider of survey solutions, offering comprehensive services to address our clients' extensive challenges.

We provide valuable insights for site surveys and hazard mitigation. With a strong focus on accuracy and precision, we are committed to deliver high-quality data and analysis that empower our clients to make informed decisions with confidence.

With our consultative approach and flexibility, we provide accurate, reliable, and cost-effective onshore, nearshore, and offshore geotechnical data solutions.

Operated with meticulous Health and Safety controls, our proficient team of experts guarantees that each project is provided with unparalleled support and expertise, driven to provide data and analysis that facilitates judicious decision-making.



Hydrographic Survey

With years of experience and a proven track record of providing excellent data and service, we offer a comprehensive range of underwater and surface data solutions that elevate confidence to the next level.

With us, you can trust that your underwater and surface data needs are in capable hands.

Topographic Survey

With years of experience executing large-scale projects, we have honed our skills to provide reliable and accurate data solutions that meet each client's unique requirements.

Our commitment to exceptional service and support empowers our clients to make informed decisions with confidence.



Our Experiences



Corporate Social Response

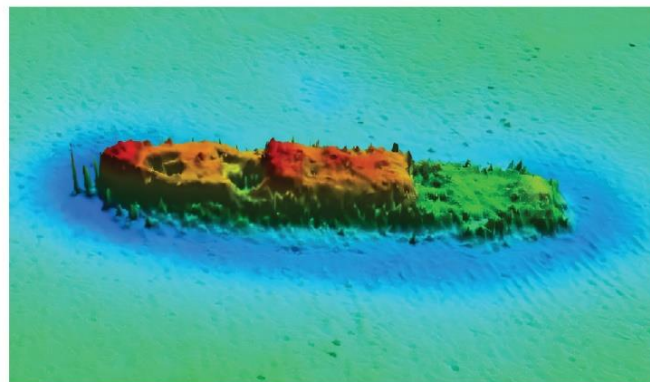
Mahakarya Geo Survey (MGS) known as a Geo Survey expert with a strong focus on industrial applications.

However, we are also deeply committed to using our expertise for humanity purposes.

Our ability to detect underwater objects and any geo mapping with high resolution has been instrumental in providing long-awaited closure for families of victims and for our nation in terms of search for our nation

We are proud to have contributed our skills to serve humanity and hope that our capabilities can continue to be of benefit to industries, infrastructure, tourism, mitigation, and search and rescue efforts.

Shipwreck Searching Mission



MGS played a significant role in locating a sunken object, namely the KM Sinar Bangun, in the vast Lake Toba, North Sumatra. Collaborating with BASARNAS and IA-ITB, MGS was able to ascertain the position of the boat, which lay at a depth of 450 meters below the water surface. Subsequently, an ROV was deployed to verify the findings and assess the state of the shipwreck.

Cimanuk River Mapping



Following the flash floods in Garut in 2016, MGS together with the ITB Geodesy Team conducted Cimanuk River mapping to identify sedimentation, changes in land use along the river, and the possibility of deforestation. Aerial photos and analysis results will be provided to the Garut Government as a guide for spatial planning and water resource management to prevent future flash floods.

Crashed Airplane Searching Mission



We aim to obtain precise coordinates of the airplane debris. MGS has demonstrated its expertise in conducting geo-hydrographic surveys that led to the successful discovery of the wreckage and fuselage of Air Asia 8501, Lion Air JT 610, and Sriwijaya SJ 182 that crashed in offshore regions. Through this investigation, MGS was able to identify the tail of the aircraft, which served as the primary lead to the location of the fuselage.

Industry



Oil and Gas Exploration
and Development



Subsea Cable and
Pipeline



Coastal Design and
Development



Infrastructure
Development



Renewable Energy



Mining



Geohazard Survey and
Mitigation



Salvage and Rescue

Contact Us

For further questions or inquiries about Mahakarya Geo Survey and our services, please choose from the following options to find the best way to contact us:

PT MAHAKARYA GEO SURVEY

Office Address

Jl. Tebet Raya No.91A, Tebet, Jakarta Selatan,
Indonesia 12810



Phone : +62 21 8378 3792



Fax : +62 21 8378 7136



Get a Quote

We are delighted to assist you with your inquiry and any survey services requirements you may have. Please do not hesitate to contact us.

commercial@mahakarya.co.id



Information

Find out more enquiries about our company, latest update, career, and others with reaching us at

info@mahakarya.co.id



[mahakaryageosurvey](https://www.instagram.com/mahakaryageosurvey)



[Mahakarya Geo Survey](https://www.linkedin.com/company/mahakarya-geo-survey)

www.mahakarya.co.id

